

PLUMBING FIXTURE SCHEDULE									
MARK	FIXTURE	MANUFACTURER/ SUPPLIER	MODEL No.	MATERIAL	SIZE	FAUCET AND DRAIN	TRAP	SUPPLIES AND STOPS	REMARKS
P-1	WATER CLOSET	AMERICAN STANDARD	#2234-001	VITROUS CHINA	ELONG BOWL	---	---	---	SENSOR OPERATED FLUSH VALVE - AMERICAN STANDARD SELECTRONIC AC POWER
P-1 ALT	TANK TYPE WATER CLOSET	AMERICAN STANDARD	#2353-100	VITROUS CHINA	ELONG BOWL	---	---	ANGLE STOPS	PRESSURE-ASSISTED TANK TYPE
P-1A	WATER CLOSET (HC)	AMERICAN STANDARD	#3043-001	VITROUS CHINA	ELONG BOWL	---	---	---	SENSOR OPERATED FLUSH VALVE - AMERICAN STANDARD SELECTRONIC AC POWER
P-1A ALT	TANK TYPE WATER CLOSET (HC)	AMERICAN STANDARD	#2487-018	VITROUS CHINA	ELONG BOWL	---	---	ANGLE STOPS	PRESSURE-ASSISTED TANK TYPE TRIP LEVER ON OPEN SIDE OF STALL (1142-800 TANK FOR RH TRIP LEVER)
P-2	URINAL	AMERICAN STANDARD	#6590-001 0.5 GPF	VITROUS CHINA	18"x28"	---	---	---	---
P-3	LAVATORY	AMERICAN STANDARD	#0124-024	VITROUS CHINA	20"x18"	#7385-050 WITH #2411-015-002 GRID DRAIN	17 GA	ANGLE STOPS	---
P-3A	LAVATORY (HC)	AMERICAN STANDARD	#0124-024	VITROUS CHINA	20"x18"	#7385-050 WITH #2411-015-002 GRID DRAIN 7723-018 OFFSET	17 GA	ANGLE STOPS	TRUEBRO 102-EZ LAVAGUARD
P-4	TWO LEVEL ELECTRIC WATER COOLER	GRANGER-ELKAY	EESTLBC	STAINL STEEL	38"x19"	---	8.0 GPH	WHEEL HAND STOP	MOUNT ONE UNIT AT HANDICAP HEIGHT
P-4A	SINGLE WATER COOLER	GRANGER-ELKAY	E758	STAINL STEEL	19"x19"	---	8.0 GPH	WHEEL HAND STOP	MOUNT AT HANDICAP HEIGHT
P-5	MIXING FAUCET	AMERICAN STANDARD	#8350-243	CAST BRASS	---	---	---	VACUUM BREAKER LEVER HANDKES	---
P-6	WALL HYDRANT	ZURN	Z-1310	BRONZE	---	---	---	VACUUM BREAKER KEY CONTROL	FREEZEPROOF
P-6A	---	---	Z-1325	---	---	---	---	---	HW & CW, FREEZEPROOF
P-7	CAN WASH FAUCET	T & S	#B-0665-BSTR	CHROME PLATED	---	---	---	VACUUM BREAKER INTERNAL STOPS & WALL BRACKET WITH CHECK VALVES	---
P-8	FLOOR DRAIN	ZURN	ZB-415	CAST BRONZE STRAINER	4"	---	DEEP SEAL TRAP	BACKWATER VALVE	---
P-8A	TRENCH DRAIN	AST, INC.	POLYDRAIN CHANNEL #100	---	---	---	DEEP SEAL TRAP	---	No. 2502 DUCTILE IRON GRATE w/825-44 VERTICAL OUTLET & CLOSED END PLATES
P-8B	TRENCH DRAIN	AST, INC.	POLYDRAIN CHANNEL #80	---	---	---	DEEP SEAL TRAP	---	No. 2502 DUCTILE IRON GRATE w/825-44 VERTICAL OUTLET & CLOSED END PLATES
P-9	FLOOR CLEAN-OUT	SIOUX CHIEF	834-4PMR	PVC WITH NICKEL/BRONZE TOP	4"	---	---	---	WITH BODY FLANGE REFER TO DETAIL ON SHEET P6.01
P-9A	TWO WAY CLEAN-OUT IN CONCRETE	SIOUX CHIEF	834-4PMR	PVC WITH NICKEL/BRONZE TOP	4"	---	---	---	WITH BODY FLANGE, USE IN CONCRETE REFER TO DETAIL ON SHEET P6.01
P-9B	TWO-WAY CLEAN-OUT	JOSAM	58900 SERIES	COATED CAST IRON w/ BRONZE PLUG	4"	---	---	---	EXTERIOR WHEN IN ASPHALT. SEE DETAIL ON SHEET P6.01, WITH SIGMA 6" VBCU118 OR EQUIVALENT. MUST MEET H ₂ O LOAD RATING AND IS CAST IRON
P-10	MEAT PREP SINK	JOHN BOOS	3PB244-2024-FL	TYPE 300 STAINLESS STEEL	50"x124"	(3) B-3952 LEVER WASTE DRAIN (1) 745 B 1128 FAUCET 8" OC, 12" SPOUT	---	VACUUM BREAKER AND ANGLE STOPS	(3) 699051253 STANDOFF BRACKETS
P-11	PRODUCE PREP SINK	JOHN BOOS	3PB244-2024-FL-1	TYPE 300 STAINLESS STEEL	29"x123"	(3) B-3952 LEVER WASTE DRAIN (1) 745 B 1128 FAUCET 8" OC, 12" SPOUT (1) 145 B 0156 ADD-A-FAUCET (1) 145 B 2278 PRE-RINSE w/YB	---	VACUUM BREAKER AND ANGLE STOPS	(3) 699051253 STANDOFF BRACKETS
P-12	WATER HEATER	GRANGER RHEEM-RUDD (ELEC.)	E385-54-G	---	85 GAL	---	---	SURFACE MOUNT THERMOSTAT	ELECTRIC WATER HEATER 54 KW 208 V, 3 PH
P-12A	WATER HEATER	GRANGER RHEEM-RUDD (ALTERNATE GAS)	HE80-199	---	80 GAL	---	---	SURFACE MOUNT THERMOSTAT	120V CONTROL CKT SEALED COMBUSTION GAS FIRE 138 MBH INPUT
P-13	WATER HEATER (PREHEATER)	GRANGER THERMA-STOR (REDUCUM)	TS III - 1	---	120 GAL	---	---	---	5000 WATT ELEMENT WITH STAND
P-14	SEAFOOD & MEAT PREP HAND SINK	JOHN BOOS	PBHS-W-1620KVFL	TYPE 300 STAINLESS STEEL	25"x22"	005439 BASKET DRAIN T&S B 0509 KNEE VALVE T&S B 0525 SM BASE	---	---	---
P-15	DELI-BAKERY SINK	JOHN BOOS	3PB2404-2024FL	TYPE 300 STAINLESS STEEL	29"x123"	(3) B-3952 LEVER WASTE DRAIN (2) 745 B 1128 FAUCET (1) 145 B 2278 PRE-RINSE w/YB	---	VACUUM BREAKER AND WALL BRACKET	---
P-16	GREASE TRAP	---	---	MINIMUM 500 GALLONS	---	---	---	EXTERIOR	RECESSED HEAVY TRAFFIC RATED
P-17	FLOOR DRAIN	ZURN	Z-560	CAST IRON	4"	---	DEEP SEAL TRAP	---	---
P-18	FLOOR DRAIN	ZURN	ZB-610-H W/Z1000	CAST BRONZE GRATE	12"x12"	---	DEEP SEAL TRAP	---	HINGED GRATE WITH SEDIMENT BUCKET
P-19	FLOOR DRAIN	ZURN	ZB-509-HIF W/Z1000	CAST BRONZE GRATE	8"	---	DEEP SEAL TRAP	---	HEEL PROOF SECURED GRATE
P-20	WALL CLEANOUT	JOSAM	58990	BRONZE PLUG STAINLESS WALL PLATE	---	---	---	---	---
P-21	PRODUCE PREP HAND SINK	JOHN BOOS	PBHS-W-1620-FL	TYPE 300 STAINLESS STEEL	25"x22"	005439 BASKET DRAIN T&S B 1146 FAUCET OPTIONAL 4" WRIST ACTION	---	WALL BRACKET	---
P-22	WATER HAMMER ARRESTER	JR SMITH	SERIES 5000	---	---	---	---	---	---
P-23	FLOOR SINK	PLASTIC ODDITIES	PFS 300 T	---	14"x14"	---	---	14"x14" W/ 12" ROUND GRATE	SECONDARY STRAINER
P-24	MOP BASIN	REDUCO	5596-363606-8020	RUBBER GASKET FIBERGLASS	36"x36"	3" GRID DRAIN AND RUBBER GASKET	DEEP SEAL TRAP	VACUUM BREAKER	W/ 24" WALL GUARDS SEE SUPPLIER INFO
P-24A	MOP BASIN	FAT	FSB-500 SERIES	RUBBER GASKET TERRAZZO	36"x36"	3" GRID DRAIN, RUBBER GASKET 830-AA SERVICE FAUCET	DEEP SEAL TRAP	VACUUM BREAKER	10" DEEP W/ 24" WALL GUARDS SEE SUPPLIER INFO
P-25	WATER HEATER	RHEEM-RUDD	EDSP-10	---	10 GAL	---	---	---	(1) 3000 WATT ELEMENT, 120V, 1PH
P-26	1 COMPARTMENT D/B CHICKEN SINK AND SEAFOOD SINK	JOHN BOOS	1PB184-10185-FL	TYPE 300 STAINLESS STEEL	24"x44"	B-3952 LEVER WASTE DRAIN T&S B 1128 FAUCET	---	VACUUM BREAKER AND WALL BRACKET	18" SPLASHGUARD
P-27	2 COMPARTMENT VEGETABLE SINK	JOHN BOOS	2PB244-1024R-FL	TYPE 300 STAINLESS STEEL	30"x77"	B-3952 LEVER WASTE DRAIN T&S B 1128 FAUCET	---	VACUUM BREAKER AND WALL BRACKET	24" SPLASHGUARD
P-28	DELI/BAKERY HAND SINK	JOHN BOOS	PBHS-W-1620KVFL	TYPE 300 STAINLESS STEEL	25"x22"	005439 BASKET DRAIN T&S B 0509 KNEE VALVE T&S B 0525 SM BASE	---	---	---
P-29	ROOF DRAIN	ZURN	Z-100	CAST IRON	4"	---	---	---	CAST IRON DOME
P-30	HOSE BIBS	WOODWARD	MODEL 24	POLISHED CHROME	---	---	---	CHROME VACUUM BREAKER	CHROME STANDARD LOOSE KEY
P-31	LOUNGE SINK AND COUNTER	JOHN BOOS	BRG-5024-HWR-FL	16 GAUGE STAINLESS STEEL	50"x24"	005439 BASKET DRAIN T&S B 0325 FAUCET	---	---	---
P-32	EXPANSION TANK	B&G	PTA-12	---	6.4 GAL	---	---	---	---
P-32A	EXPANSION TANK	B&G	PTA-5	---	2.0 GAL	---	---	---	---
P-32B	EXPANSION TANK	B&G	PTA-200	---	8.0 GAL	---	---	---	---
P-33	EMER EYEWASH UNIT WITH BRACKET	BRADLEY	S19-220 WITH THERMOSTATIC MIXING VALVE S19-2000	---	---	---	---	---	SEE DETAIL ON SHEET P6.01
P-33A	DECK MOUNTED EYEWASH	GUARDIAN	G1805-TM	---	---	---	---	---	PROVIDE THERMOSTATIC MIXING VALVE
P-34	TRAP PRIMER	PREDISION PLUMBING	MPB-800	---	---	3/8" TYPE 1 SOFT TUBING	---	---	MOUNTED A MINIMUM 12" AFF ENSURE PRIMER IS MOUNTED IN ANY AREA ACCESSIBLE FOR SERVICE
P-35	RECESSED WALL HYDRANT	WOODWARD	B65	BRASS	3/4"	---	---	---	LOOSE KEY FREEZEPROOF, LOCKING COVER

- NOTES:
- THE COLOR FOR ALL WATER CLOSETS, URINALS AND LAVATORIES SHALL BE "WHITE."
 - P-33 EMERGENCY EYE WASH STATION AND S19-2000 MIXING VALVE PROVIDED BY FOOD LION AND INSTALLED BY PLUMBING CONTRACTOR AT 36" AFF. FLOOR DRAIN NOT REQUIRED.
 - VIT'S SHALL BE A MINIMUM OF 10' FROM ANY FRESH AIR INTAKE, COORDINATE AS REQUIRED WITH MECHANICAL CONTRACTOR AND MECHANICAL ROOF PLAN.

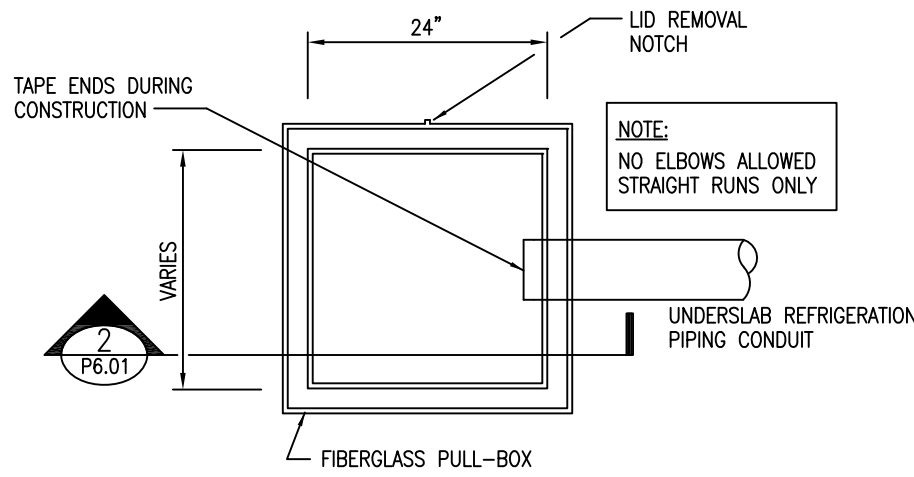
FIXTURE NOTE:
FOR PLUMBING FIXTURES MARKED P-10, P-11, P-14, P-15, P-21 & P-22 THE SINK TUBS SHALL BE FABRICATED WITH 16 GAUGE STAINLESS STEEL & THE DRAIN BOARDS SHALL BE FABRICATED WITH 14 GAUGE STAINLESS STEEL. SEE THE "FOOD LION" SINK SPECIFICATION FOR MORE INFORMATION.

ACCEPTABLE ALTERNATE MANUFACTURERS:

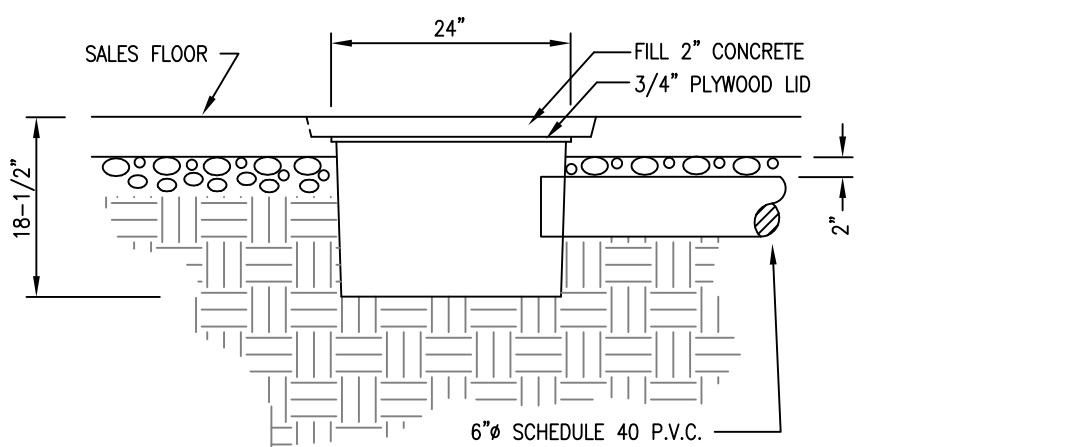
P-1 TOTO C1705EN KOHLER K-4350	P-8 SMITH 2005-DV-PB WADE W-1104-757-31-2 JOSAM 30004-7EJ-2 WATTS FD-100-10-8
P-1A TOTO C1705ELN KOHLER K-4368	P-8A J.R. SMITH D9930 - SYSTEM P-8B J.R. SMITH D9930 - SYSTEM
P-2 TOTO UT447E (0.5 GPF) KOHLER K-4940-ET (0.5 GPF)	P-17 JOSAM 39964 W/67104A WATTS FD-460-F-9 WADE W-1640
P-3 TOTO LT307.4 KOHLER K-2054	P-18 SMITH 2415-B-PB WATTS FD-460-F-9 W/67104A
P-4 HALSEY K-8906	P-19 JOSAM 32300-1-88100 SMITH 2120 WATTS FD-320-Y-6 WADE W-1310-1-W/ W-2450
P-6 SMITH 5609-OT WOODFORD MODEL 60 KOHLER W-8620-L JOSAM 71050-50 WATTS HY420-6	P-20 WATTS CO-590-RD WADE W-8500/ W-5480R
P-6A SMITH 5560 WADE W-8606-HC JOSAM 71650-52-80 WATTS HY420-6	P-23 SIOUX CHIEF 8613PX
P-7 AMERICAN STANDARD 8344-111	P-29 WATTS RD-300K

LOCATION & PHONE FOR FIXTURE SUPPLIERS:

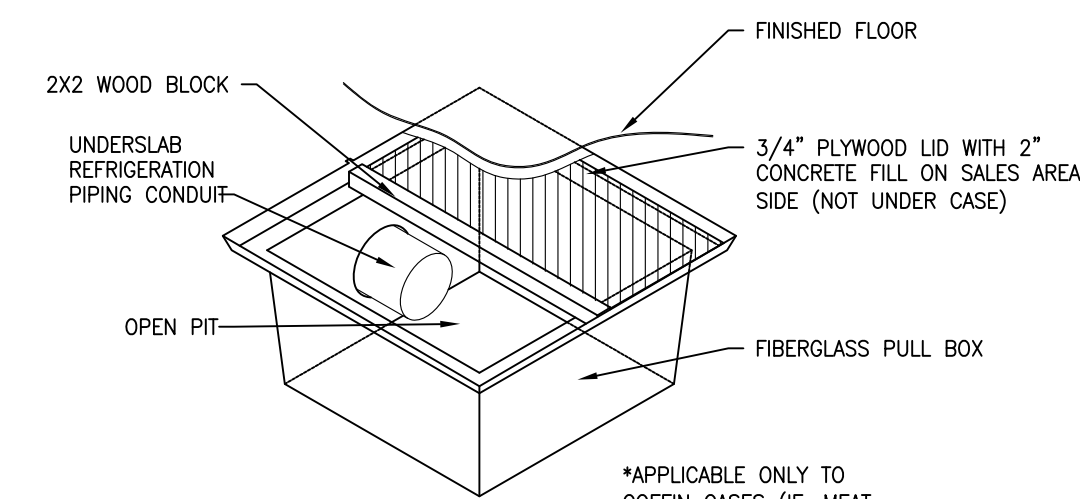
PLASTIC ODDITIES	SHELBY, NC	PH(800) 438-5327
JOHN BOOS	ROSWELL, GA	PH(800) 327-1817
GRANGER	CHARLOTTE, NC	PH(704) 904-6151
JOSAM	CHARLOTTE, NC	PH(800) 446-2728
THERMA-STOR	TROUTMAN, NC	PH(800) 533-7533
AST, INC.	TROUTMAN, NC	PH(800) 438-6057
WATTS	SPINDALE, NC	PH(800) 338-2581
WADE	CHARLOTTE, NC	PH(704) 525-3043
B&G	MORTON GROVE, IL	PH(847) 966-3700



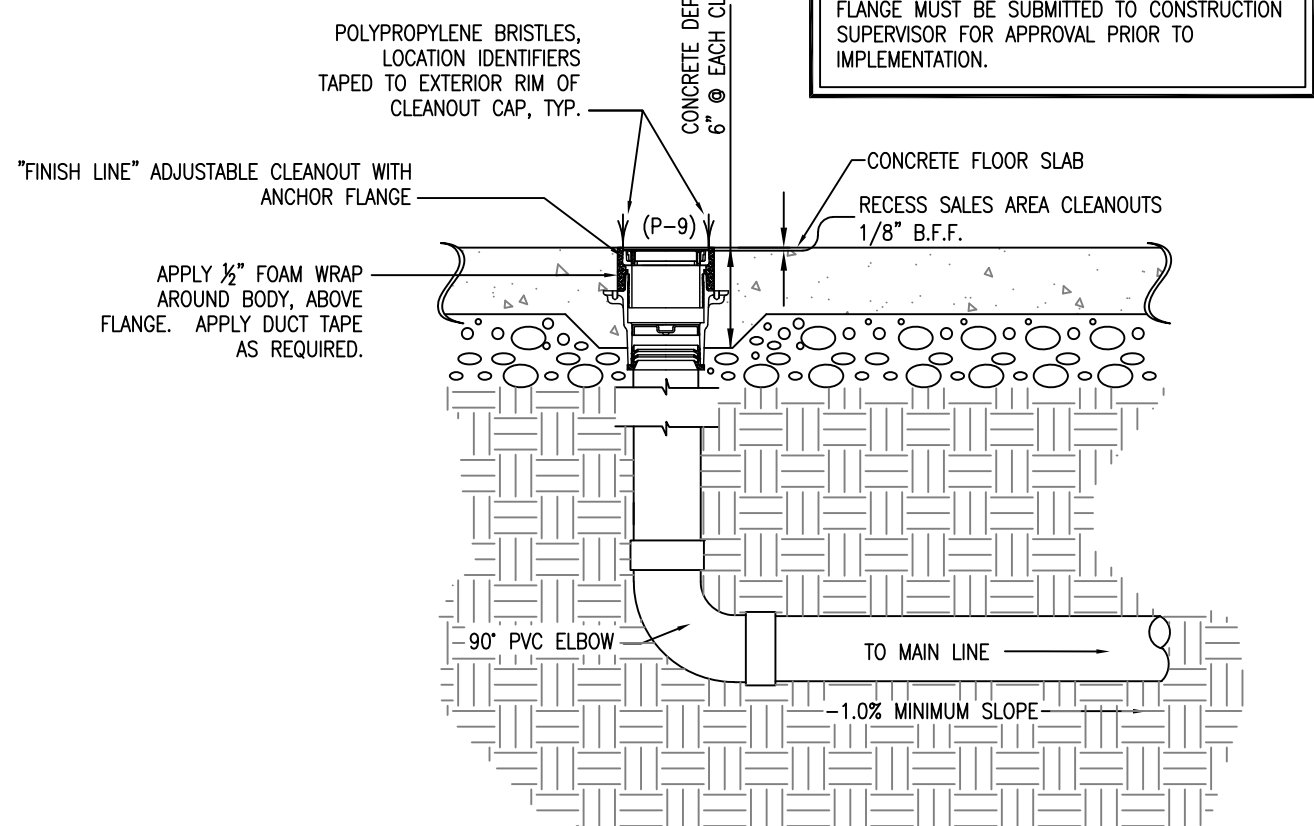
1 ACCESS PIT PLAN VIEW
P6.01 NOT TO SCALE



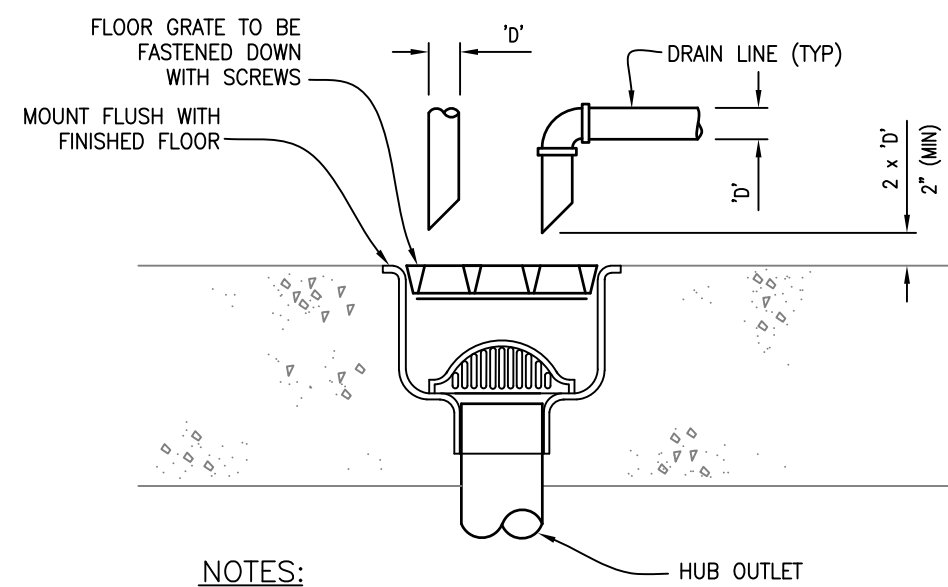
2 SECTION THRU PIT
P6.01 NOT TO SCALE



3 PIT ISOMETRIC
P6.01 NOT TO SCALE

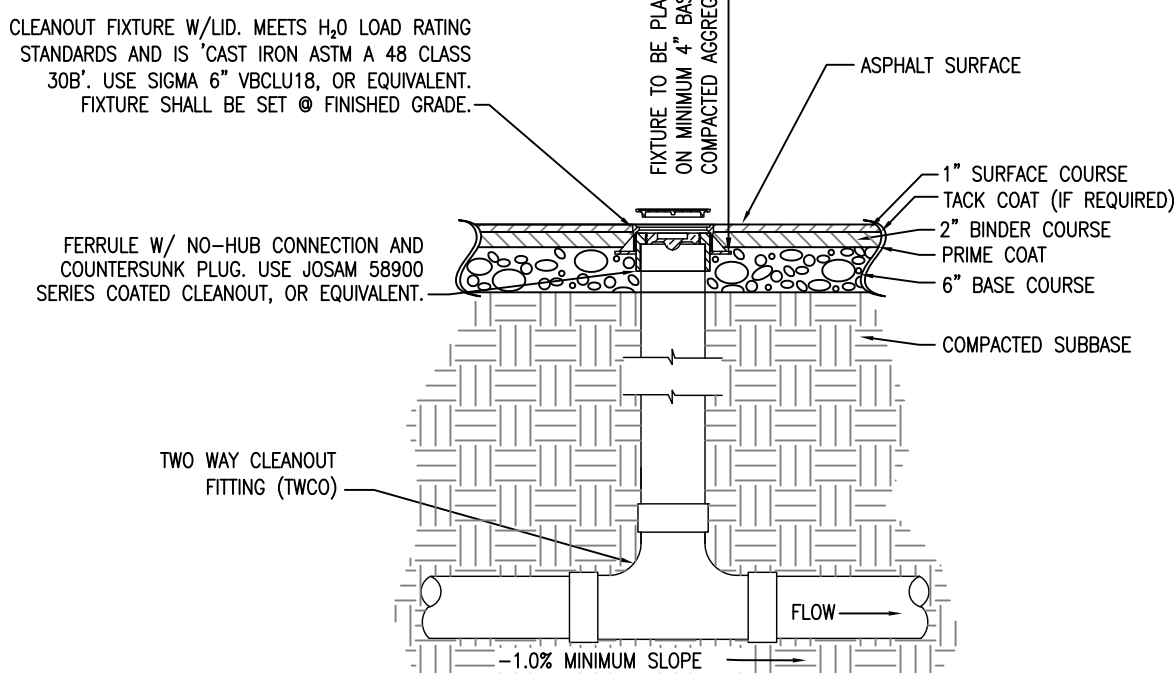


4 SALES AREA CLEANOUT SECTION
P6.01 NOT TO SCALE

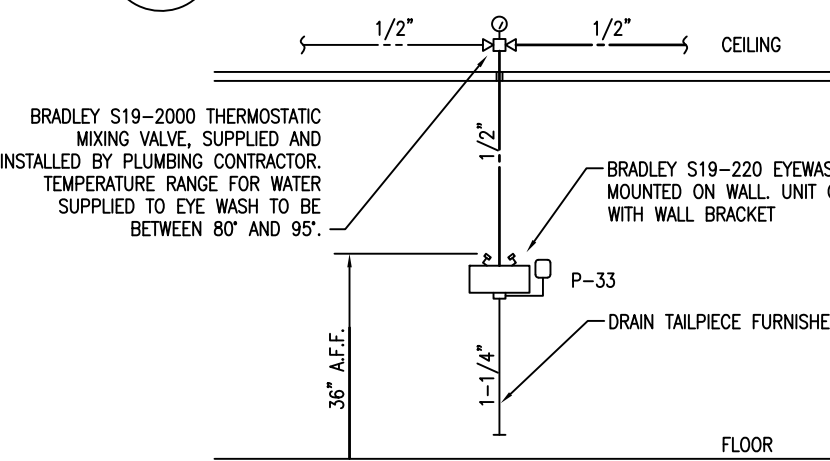


- NOTES:
- FLOOR SINK COVER TO BE FLUSH WITH TILE OR FLUSH WITH CONCRETE FLOOR IN AREA WITH NO TILE.
 - PROVIDE ONE DRAIN LINE FOR EACH BASIN FOR MULTI-BASIN PREP SINKS. NO MANIFOLDS PERMITTED.

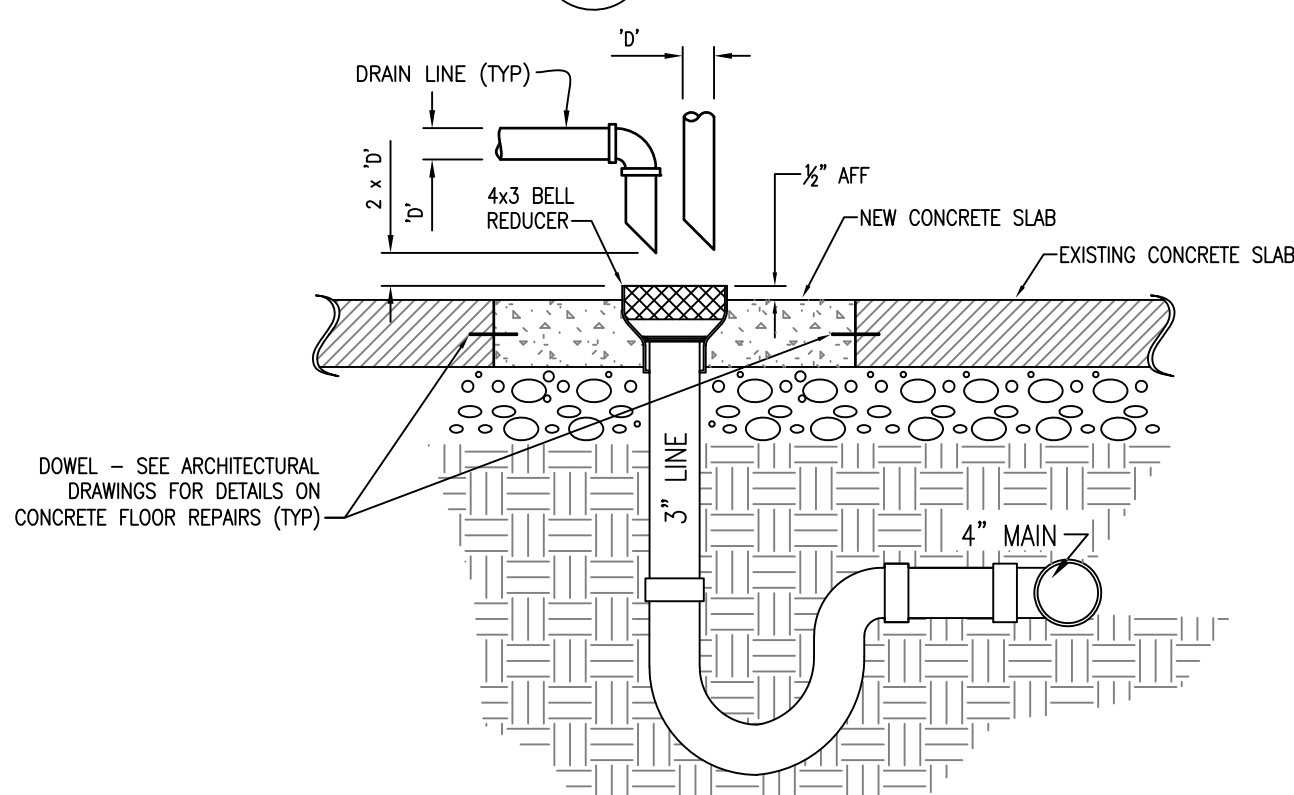
5 FLOOR SINK DETAIL
P6.01 NOT TO SCALE



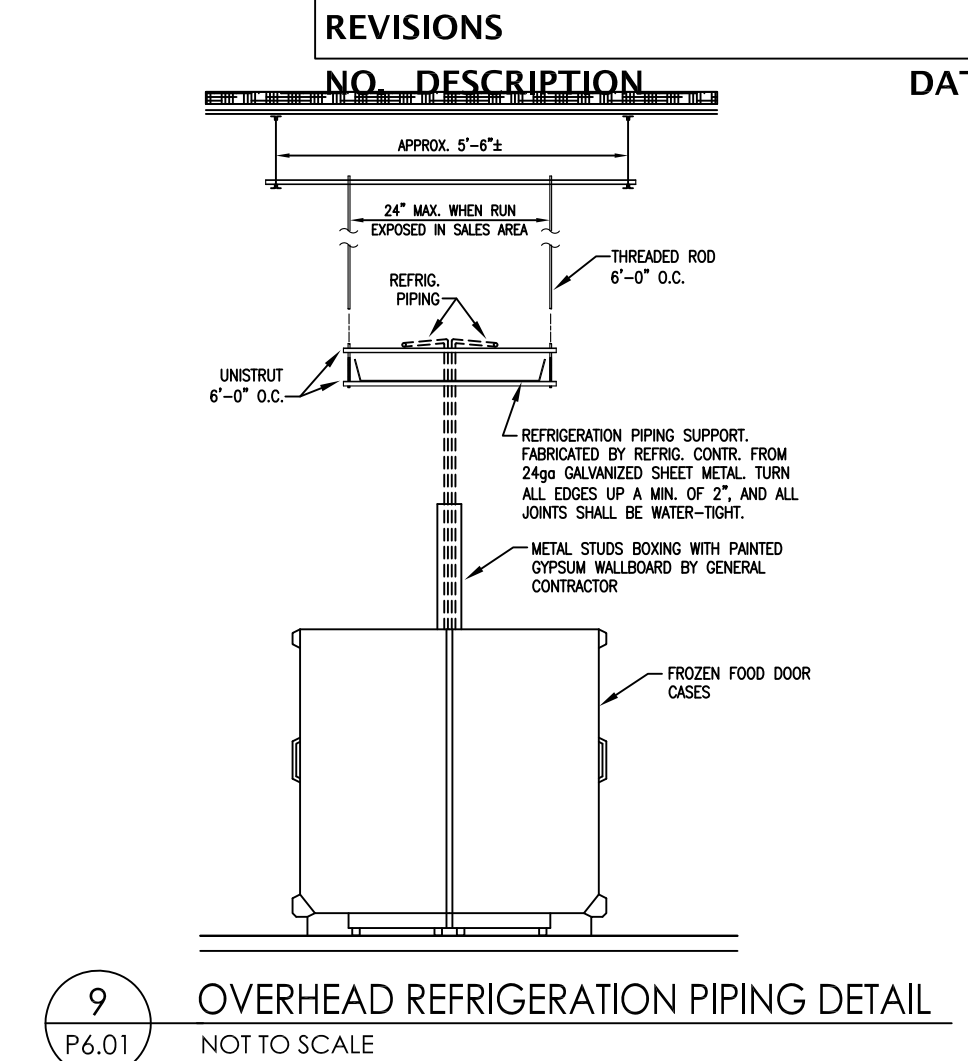
6 TWO WAY CLEANOUT SECTION IN ASPHALT
P6.01 NOT TO SCALE



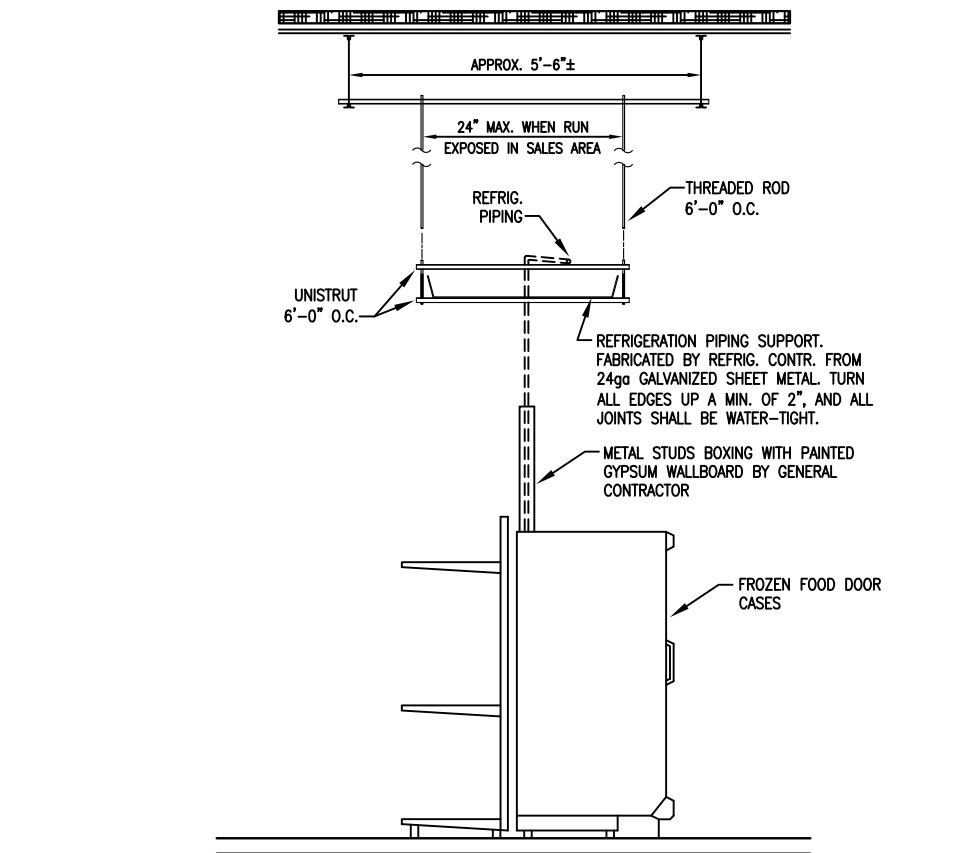
7 EYEWASH DETAIL
P6.01 NOT TO SCALE



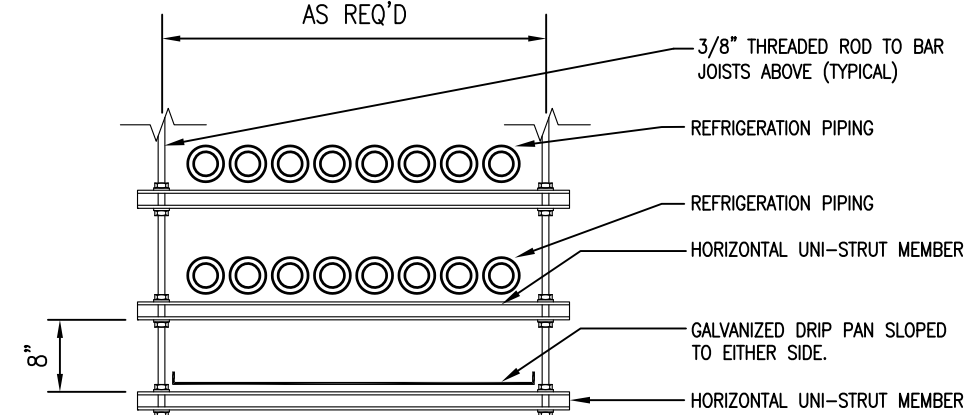
8 HUB DRAIN INSTALLATION DETAIL
P6.01 NOT TO SCALE



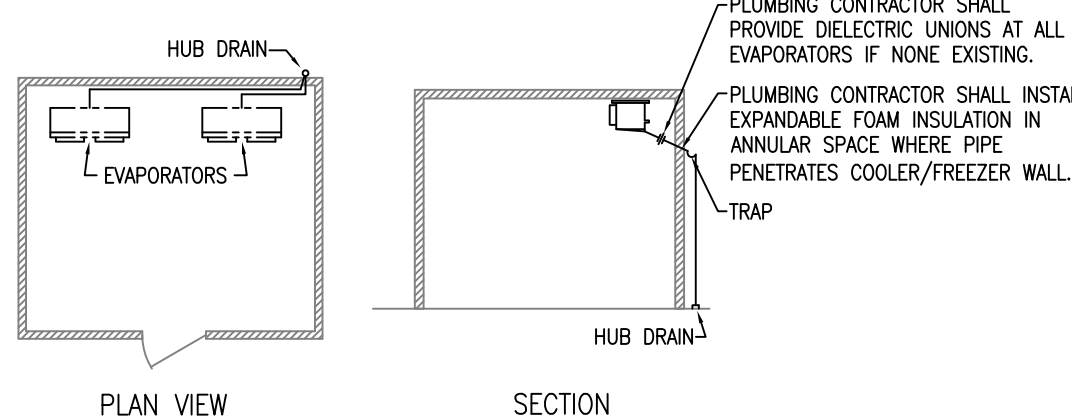
9 OVERHEAD REFRIGERATION PIPING DETAIL
P6.01 NOT TO SCALE



10 OVERHEAD REFRIGERATION PIPING DETAIL
P6.01 NOT TO SCALE



11 OVERHEAD REFRIGERATION DRIP PAN DETAIL
P6.01 NOT TO SCALE



12 TYPICAL CONDENSATE DRAINS
P6.01 NOT TO SCALE

- CONDENSATE DRAIN NOTES
- CONDENSATE DRAIN LINES TO BE 3/4" MIN. TYPE "M" COPPER WITH 1 1/2" MINIMUM STANDOFFS FROM WALL, BY PLUMBING CONTRACTOR.
 - CONDENSATE DRAIN LINES FROM FREEZERS TO HAVE EASY HEAT COPPER TUBE HEATER 20 WATTS PER LINEAR FT. 120 V AC OR APPROVED. EQUAL TAPE INSTALLATION BY REFRIGERATION CONTRACTOR.
 - CONDENSATE DRAIN LINES SHALL LEAVE FREEZERS AT 45 DEGREE ANGLE THROUGH WALL.
 - ALL COPPER CONDENSATE PIPING TO BE PROVIDED WITH COPPER-COATED HANGERS AND CLAMPS. NO DISSIMILAR METAL ALLOWED. INSTALL ONE HANGER PER EVAPORATOR DRAIN (PRODUCE PREP & MEAT PREP).
 - SLOPE IN COOLER 1/4" FOOT TO HUB DRAIN. SLOPE IN FREEZER 3" FOOT TO HUB DRAIN.
 - EACH EVAPORATOR SHALL HAVE ITS OWN DRAIN LINE RUNNING TO HUB DRAIN.

BOWERS CONSULTING, PA
1620 South MLK, Jr. Avenue - Suite 106
Salisbury, NC 28144
T: 704-630-0075 F: 704-630-0051
NC PE CORPORATION: C-1619
DE PE CORPORATION: 4390
VA PE CORPORATION: 0405001434

"PROFESSIONAL CERTIFICATION"
I hereby certify that these documents were prepared or approved by me, and that I am a duly licensed professional engineer under the laws of the state of Maryland, License No. 41658, expiration date: 02/19/2022.

Riddick Fiedler Stern
Architecture ■ Planning ■ Interior Design
261 West Bute Street ■ Norfolk, VA 23510 ■ (757) 627-2791



FOOD LION STORE 2560
7514 NORTH POINT ROAD
EDGEMERE, MD 21219
PLUMBING SCHEDULE

DRAWING FILE NAME
2560 P6.01_00
RFS JOB #
2019-042
DATE
02/21/2020
P6.01
5 OF 6